

2000nm Polarization Maintaining 3-port Optical Circulator

FEATURES

- High Isolation
- Low Insertion Loss
- Epoxy-Free Optical Path
- High Reliability and Stability
- Low Profile Packaging
- Fiber Optic Amplifiers
- Fiber Optic Instruments
- WDM Systems
- Dispersion Compensation
- Light Routing

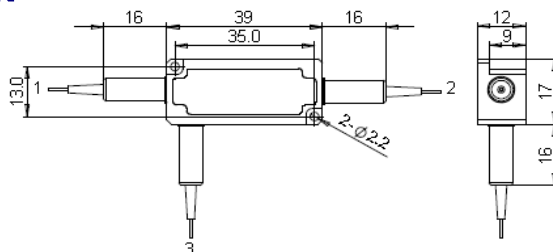
APPLICATIONS

SPECIFICATIONS

Parameter	Unit	Value	
Center Wavelength (λ_c)	nm	2000	
Bandwidth	nm	+/-30	
Insertion Loss@23°C	(Typ.)	dB	1.3
	(Max.)	dB	1.8
Isolation@23°C	(Typ.)	dB	20
	(Min.)	dB	16
Extinction Ratio	dB	≥ 18	
Optical Return Loss	dB	≥ 45	
Cross Talk	dB	≥ 40	
Work Mode	S Type	-	Can only work in slow axis
	F Type	-	Can work Both in slow & Fast Axis
Fiber Type	-	PM1550 Panda Fiber or PM1950 Fiber (V) 10/130um PMDC Fiber (O) or 25/250um PMDC Fiber (R)	
Fiber Tensile Load	N	5	
Maximum Optical Power (CW)	mW	300	
Operating Temperature	°C	0~50	
Storage Temperature	°C	-40~85	

- Note:**
- Specifications are for device without connectors; Specifications may change without notice.
 - To add connectors, IL is 0.3dB higher, RL is 5dB lower, ER is 2dB Lower, Connector key is aligned to slow axis.
 - Devices for higher optical power or with other type fiber or consigned fiber are also available; Devices can only work in the core of Double Cladding (DC) Fiber, Cladding Power must be stripped before connecting the device.

PACKAGE DIMENSION



ORDERING INFORMATION (PN)

FPCR-	NNNN	-	(C)	3	C	C	NN	-	CC/CCC
<i>Center Wavelength</i>	<i>Work Mode</i>				<i>Fiber Type</i>	<i>Fiber Sleeve</i>	<i>Fiber Length</i>		<i>Connector Type</i>
2000-2000nm	F=F Type Blank for S Type				2= PM1550 Fiber V= PM1950 Fiber O=10/130 PMDC Fiber R=25/250 PMDC Fiber	B= Bare Fiber L= Loose Tube 2=2mm Cable 3=3mm Cable	05=0.5m 10=1.0m 15=1.5m 20=2.0m		N=Without Connector FC/APC=FC/APC Connector LC/PC=LC/PC Connector SC/UPC=SC/UPC Connector